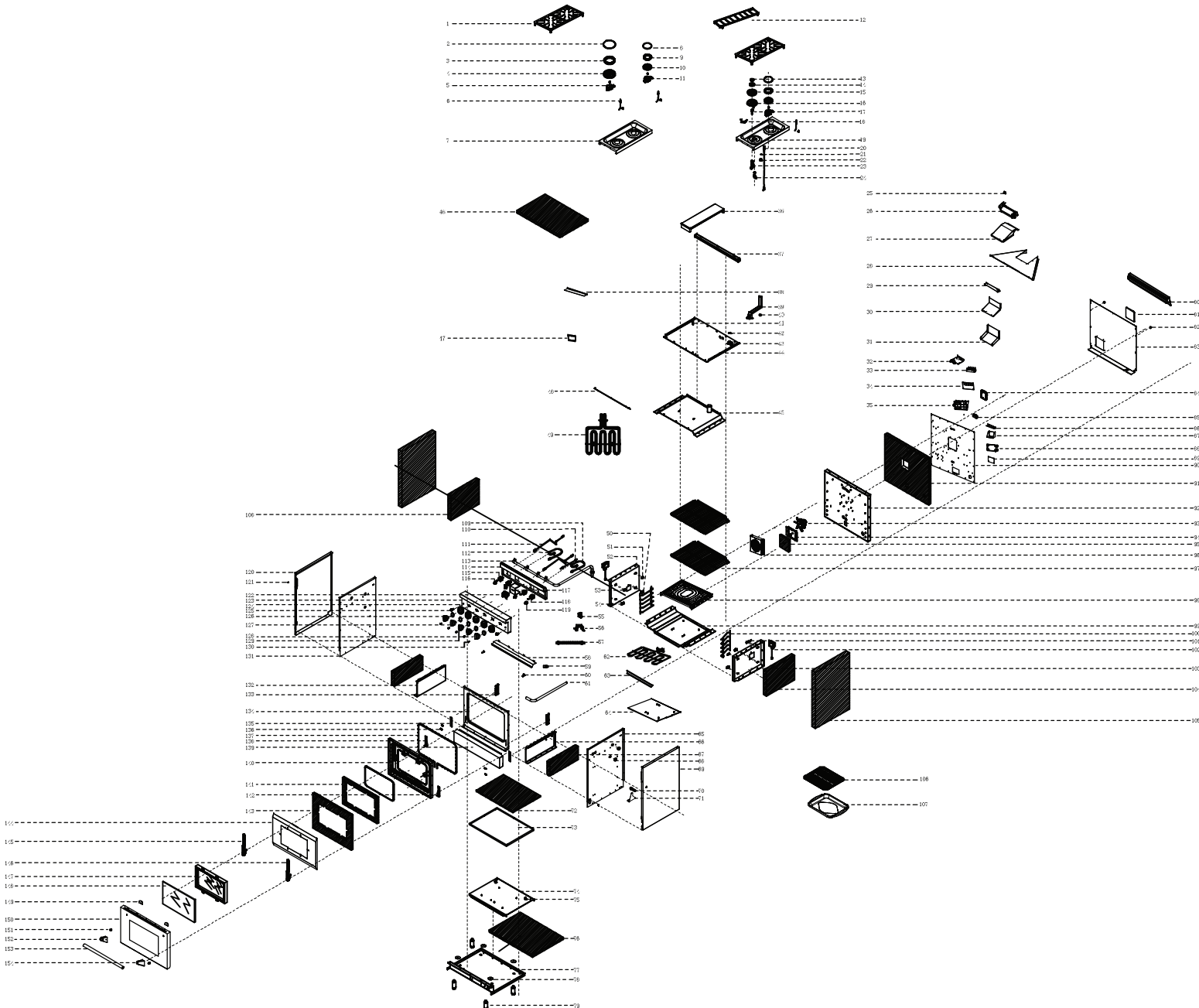


SUPPORT I DUAL FUEL RANGE KRD306F



SUPPORT I DUAL FUEL RANGE KRD306F



Number	Part Number	Part Name
1	13.01.000031-000-A0	Cooking grate
2	10.01.000076-000-A0	Burner Cap(18000BTU)
3	10.01.000077-000-A0	Flame Ring(18000BTU)
4	10.01.000078-000-A0	Flame Ring Base(18000BTU)
5	10.01.000079-000-A0	Bottom Cup(18000BTU)
6	10.09.000072-000-A2	Electrode
7	04.06.001127-000-A1	Drip Pan
8	10.01.000020-000-A0	Burner Cap
9	10.01.000021-000-A0	Flame Ring
10	10.01.000022-000-A0	Flame Ring Base
11	10.01.000023-000-A0	Bottom Cup
12	13.01.000032-000-A0	Central cooking grate
13	10.01.000176-000-A0	Inner Burner Head (15000BTU)
14	10.01.000177-000-A0	Inner Burner Head (15000BTU)
15	10.01.000178-000-A0	Inner Burner Head (15000BTU)
16	10.01.000179-000-A0	Outer Burner Base (15000BTU)
17	10.04.000069-000-A0	Burner Supporter Pipe
18	04.04.001675-000-A3	Furnace head stents(15K)
19	04.06.001126-000-A1	Drip Pan
20	07.99.000321-000-A1	Sabaf Electrode 4 L=1320
21	04.02.001836-000-A0	Ignition pin holder
22	06.04.000330-000-A0	Conductive Plate
23	22.99.000015-000-A2	Main Jet Holder
24	22.99.000073-000-A0	Burner nozzle
25	07.02.000222-000-A0	Thermal switch
26	07.99.000221-000-A0	Cross-flow fan

APPLICABLE MODEL: KRD306F

27	04.03.000898-000-A0	Cross - flow hood
28	04.04.000897-000-A0	Cross - flow fan gathering hood
29	04.04.000896-000-A0	Cross-flow fan fixing plate
30	04.03.000895-000-A0	Cross flow fan outlet B
31	04.03.000894-000-A0	Cross-flow fan outlet A
32	04.04.001652-000-A1	Power box support
33	05.07.000194-000-A0	Binding post
34	07.08.000331-000-A0	Relay oven control panel
35	06.06.000269-000-A0	Relay oven electric control panel fixing box
36	04.01.001331-000-A1	Drip Cover
37	04.04.000031-000-A2	Furnace head supports beam (rear)
38	04.04.001004-000-A0	Pressure regulating valve baffle
39	20.03.000193-000-A0	Vent weld components
40	10.99.000120-000-A1	Overheat protector
41	06.15.000152-000-A0	Wire clip
42	04.04.002221-000-A0	Top liner manifold support frame B
43	04.04.000032-000-A1	Top liner manifold support frame A
44	04.04.000955-000-A0	Top plate
45	20.99.000551-000-A1	Welding piece for oven top
46	18.01.000968-000-A0	Oven top insulation cotton
47	04.04.001000-000-A0	Pressure regulating valve heat shield
48	04.02.000055-000-A1	Oven Baffle
49	10.04.000121-000-A0	3.5 KW heating pipes
50	04.02.000444-000-A1	Rear lower brace
51	04.02.000443-000-A1	Rear upper brace
52	04.06.000343-000-A0	Left inner plate of oven
53	04.02.000268-000-A1	Hanger support piece
54	04.02.000269-000-A1	Undercarriage support
55	09.03.000009-000-A0	Regulator

56	04.04.000480-000-A0	Alida pressure regulating valve fixing clamp
57	11.03.000131-000-A0	Main manifold bellows
58	04.02.001010-000-A1	Control panel bottom plate
59	11.03.000132-000-A0	Main manifold bellows joint
60	04.02.000986-000-A1	Control panel seal
61	11.03.000130-000-A0	Main manifold B
62	10.04.000123-000-A0	3.0 KW heat pipes
63	04.01.000862-000-A2	Door frame trim
64	04.03.002115-000-A0	30 "floor flameproof panel
65	04.04.000873-000-A1	Right board lining
66	04.03.000006-000-A3	U-shaped fire row right board
67	18.01.000486-000-A0	Left and right lower board inner insulation cotton
68	17.02.000001-000-A0	Bushing (sb-30)
69	20.02.000522-000-A1	Right plate welding piece
70	06.01.000017-000-A0	Non-inclined screw
71	04.04.000066-000-A0	Anti-tilt fixing block
72	18.01.000422-000-A0	Bottom partition insulation cotton
73	04.04.000848-000-A0	Bottom of the screen
74	04.03.000341-000-A1	Bottom lining
75	04.04.000004-000-A1	Bottom plate lining mounting frame
76	18.01.000482-000-A0	Baseboard insulation cotton
77	04.04.000952-000-A2	Floor
78	04.04.002652-000-A0	Pull riveting reinforcing plate
79	05.01.000189-000-A0	Adjustbale leg
80	20.01.000528-000-A1	Island Trim
81	04.04.000792-000-A1	Rear plate cover
82	06.08.000043-000-A0	Rear plate rubber pad
83	04.04.001328-000-A2	Rear panel
84	07.07.000282-000-A0	Pulse igniter (one out four)

84	07.07.000282-000-A0	Pulse igniter (one out four)
85	06.13.000191-000-A0	Power line clamp
86	04.04.000551-000-A0	Rear panel liner C
87	04.04.001327-000-A1	Power line support
88	05.99.000153-000-A0	Power panel mounting box
89	07.13.000318-000-A0	Luminous knob power panel
90	04.04.002611-000-A1	Rear plate lining A
91	18.01.000513-000-A0	Rear panel insulation cotton
92	20.06.001009-000-A0	Welding piece for oven back plate
93	07.03.000006-000-A0	Convection Fan
94	04.04.000464-000-A1	Fan bearing
95	18.01.000011-000-A2	Fan support insulation cotton
96	04.06.002243-000-A0	Fan Cover
97	13.05.000056-000-A0	30 "grill
98	20.06.000192-000-A1	Welding parts for oven bottom plate cover
99	20.06.000510-000-A1	Solders for oven bottom plate
100	13.05.000053-000-A0	Oven rack supporter
101	04.01.002239-000-A0	New heat sensing bar bracket
102	07.04.000007-000-A0	Oven lamp
103	04.06.000365-000-A0	Oven right inside plate
104	18.01.000485-000-A0	Right upper board inner insulation cotton
105	18.01.000483-000-A0	Left and right outer board insulation cotton
106	04.06.000077-000-A1	Broil Pan Cover
107	04.06.000078-000-A1	Broil Pan
108	18.01.000484-000-A0	Left upper board inner insulation cotton
109	11.02.000117-000-A0	0 degree valve aluminum tube B
110	11.02.000006-000-A1	Main valve aluminum tube B
111	11.02.000118-000-A0	Main furnace head gas valve aluminum tube C
112	12.02.000121-000-A0	Main furnace head gas valve aluminum tube E

113	11.03.000126-000-A0	Main manifold A.
114	20.04.000565-000-A1	Welding parts for air valve fixing plate
115	09.01.000007-000-A0	Main furnace head air valve (CP)
116	06.13.000010-000-A0	Main furnace head air valve fixing clamp
117	04.04.000875-000-A0	Temperature control valve fixing plate
118	09.01.000020-000-A0	0 degree air valve for main furnace head
119	06.01.000070-000-A0	Main furnace head fixing clamp screw
120	20.02.000521-000-A1	Left side plate welding
121	17.01.008001-000-A0	Upper Cover of rubber gasket
122	07.12.000005-000-A0	Oven Thermostat
123	20.02.000465-000-A2	Welding parts for control panel
124	04.02.001997-000-A0	Knob trim ring
125	07.02.000316-000-A0	Metal switch with lamp
126	04.02.001448-000-A0	Knob decorative ring fixing piece
127	22.99.000160-000-A0	Single main air valve knob assembly
128	22.99.000159-000-A0	Double fire main air valve knob assembly
129	22.99.000161-000-A0	Oven temperature control valve knob assembly
130	07.05.000360-000-A0	Blue dc LED light assembly
131	04.04.000872-000-A1	Left board lining
132	04.03.000005-000-A3	U-shaped fire row left panel
133	05.03.000017-000-A0	Hinge Receiver
134	04.01.002222-000-A2	Door frame
135	04.04.000592-000-A0	Door frame anti-distortion gasket
136	06.01.000079-000-A0	M5*12 hinge screw (umbrella head)
137	11.05.000012-000-A0	Gasket
138	04.02.000211-000-A1	Door back plate anti-jumping porcelain gasket (L)
139	20.02.000579-000-A0	Solders for door bottom decorative plate
140	20.06.000013-000-A0	Welding piece behind door
141	18.01.000493-000-A0	Door insulation cotton 1

142	04.02.000212-000-A1	Door back plate anti-jumping porcelain gasket (R)
143	18.01.000494-000-A0	Door insulation cotton 2
144	04.03.000069-000-A0	The door liner
145	05.03.000015-000-A0	Door hinge left
146	05.03.000016-000-A0	Door hinge right
147	22.99.000110-000-A0	Oven window assembly
148	15.01.000017-000-A0	Gray Glass
149	04.02.000987-000-A1	Handle seat cushion
150	20.02.000608-000-A1	Front door welding piece
151	12.02.000026-000-A0	Handle seat retaining rod
152	12.02.000068-000-A1	Door Handle Support, Left
153	12.01.000018-000-A2	Door Handle
154	12.02.000069-000-A1	Door Handle Support, Right