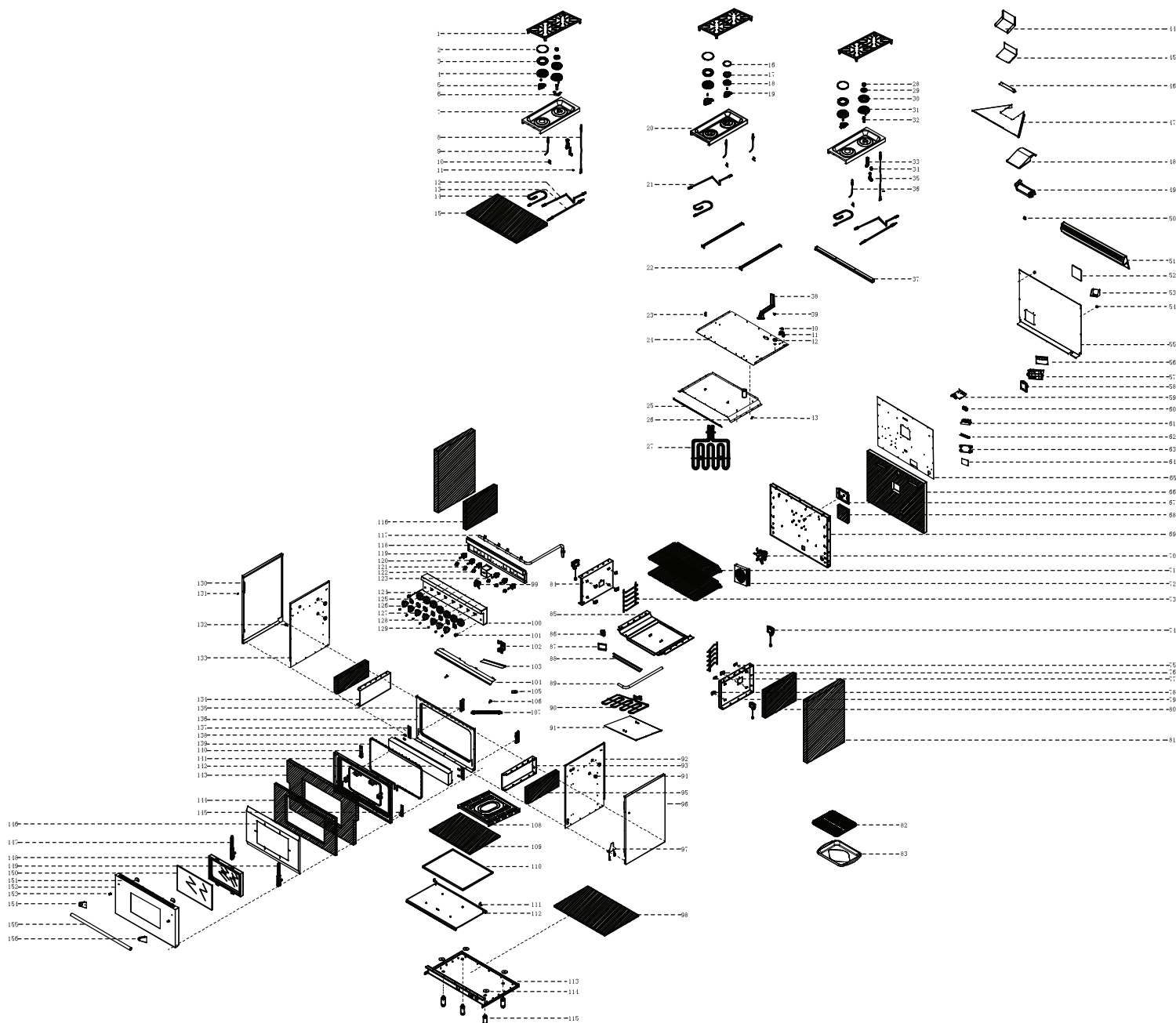


# SUPPORT I DUAL FUEL RANGE KRD366F



# SUPPORT I DUAL FUEL RANGE KRD366F



1	13.01.000031-000-A0	Furnace head support frame
2	10.01.000076-000-A0	Furnace top cover (18000btu)
3	10.01.000077-000-A0	Burner ring (18000btu)
4	10.01.000078-000-A0	Fire ring base (18000btu)
5	10.01.000079-000-A0	Furnace head base (18000btu)
6	04.04.001675-000-A3	15K furnace head bracket
7	04.06.001140-000-A1	Furnace head support plate
8	07.99.000321-000-A1	Electrode 1
9	10.09.000072-000-A2	Burner electrode
10	06.09.000062-000-A0	Furnace electrode spring (with SABAF)
11	04.02.001836-000-A0	Ignition pin holder
12	11.02.000085-000-A0	0 degree air valve 48 aluminum tube D
13	11.02.000005-000-A1	Main air valve aluminum tube A
14	12.02.000121-000-A0	Main furnace head gas valve aluminum tube E
15	18.01.000969-000-A0	Oven top insulation cotton
16	10.01.000020-000-A0	Inner Burner Head
17	10.01.000021-000-A0	Burner ring
18	10.01.000022-000-A0	Fire ring base
19	10.01.000023-000-A0	The furnace head base
20	04.06.001127-000-A1	Furnace head support plate
21	11.02.000118-000-A0	Main furnace head gas valve aluminum tube C
22	04.06.002244-000-A1	Furnace head support plate decoration strip
23	06.15.000152-000-A0	Line buckle
24	04.04.000961-000-A1	The top plate
25	04.02.000098-000-A1	The oven baffle
26	20.99.000559-000-A2	Welding piece for oven top
27	10.04.000121-000-A0	3.5 KW heat pipes
28	10.01.000176-000-A0	New stove top cover
29	10.01.000177-000-A0	New burner baffle ring
30	10.01.000178-000-A0	New burner ring
31	10.01.000179-000-A0	New burner base
32	10.04.000069-000-A0	New furnace head support pipe
33	22.99.000015-000-A2	Furnace head air regulating valve assembly

34	06.04.000330-000-A0	Furnace head conductive plate
35	22.99.000073-000-A0	Burner small nozzle assembly
36	07.10.000151-000-A2	Furnace head electrode 3
37	04.04.000127-000-A2	furnace head supports beam(rear)
38	20.03.000193-000-A0	Vent weld components
39	10.99.000120-000-A1	Overheat protector
40	04.04.002221-000-A0	Top liner manifold support frame B
41	04.04.000032-000-A1	Top liner manifold support frame A
42	17.02.000002-000-A0	Bushing (sb-19)
43	04.01.002239-000-A0	New heat sensing bar bracket
44	04.03.000894-000-A0	Cross-flow fan outlet A
45	04.03.000895-000-A0	Cross flow fan outlet B
46	04.04.000896-000-A0	Cross-flow fan fixing plate
47	04.04.000897-000-A0	Cross - flow fan gathering hood
48	04.03.000898-000-A0	Cross - flow hood
49	07.99.000221-000-A0	Tubular fan
50	07.02.000222-000-A0	Normally closed thermal switch
51	20.01.000536-000-A1	Island Trim
52	04.04.000792-000-A1	After the plate cover
53	04.04.001327-000-A1	Power line support
54	06.08.000043-000-A0	Rear plate rubber pad
55	04.04.001329-000-A0	The rear panel
56	07.08.000331-000-A0	Relay oven control panel
57	06.06.000269-000-A0	Relay oven electric control panel fixing box
58	07.07.000283-000-A0	Pulse igniter
59	04.04.001652-000-A1	Power box support
60	06.13.000191-000-A0	Power line clamp
61	05.07.000194-000-A0	terminal
62	04.04.000551-000-A0	Back plate lined with C
63	05.99.000153-000-A0	Power panel mounting box
64	07.13.000318-000-A0	Luminous knob power panel
65	04.04.002612-000-A1	Back plate lining A
66	18.01.000518-000-A0	Rear panel insulation cotton
67	04.04.000464-000-A1	The fan bearing
68	18.01.000011-000-A2	Fan support insulation cotton
69	20.06.000558-000-A2	Welding piece for oven back plate
70	07.03.000006-000-A0	Convection Fan

71	13.05.000057-000-A0	Grill
72	04.06.002243-000-A0	The fan casing
73	13.05.000053-000-A0	Oven rack supporter
74	07.04.000007-000-A0	The oven lamp
75	04.02.000443-000-A1	Upper supporting sheet behind the hanger
76	04.02.000444-000-A1	Rear lower brace
77	04.02.000268-000-A1	Hanger support piece
78	04.02.000269-000-A1	Undercarriage support
79	04.06.000365-000-A0	Oven right inside plate
80	18.01.000485-000-A0	Right upper board inner insulation cotton
81	18.01.000483-000-A0	Left and right outer board outer cotton
82	04.06.000077-000-A1	Broil Pan Cover
83	04.06.000078-000-A1	Broil Pan
84	04.06.000343-000-A0	Left inner plate of oven
85	20.06.000557-000-A1	Solders for oven bottom plate
86	09.03.000009-000-A0	Regulator
87	04.04.001000-000-A0	Pressure regulating valve heat shield
88	04.01.000863-000-A0	Door frame trim
89	11.03.000130-000-A0	Main manifold B
90	10.04.000123-000-A0	3.0 KW heat pipes
91	04.03.002371-000-A0	36 "bottom plate flameproof plate
92	04.04.000873-000-A1	Right board lining
93	04.03.000006-000-A3	U-shaped fire row right board
94	17.02.000001-000-A0	Bushing (sb-30)
95	18.01.000486-000-A0	Left and right lower board insulation cotton
96	20.02.000522-000-A1	Right plate welding piece
97	04.04.000066-000-A0	Anti-tilt fixing block
98	18.01.000498-000-A0	Baseboard insulation cotton
99	07.12.000005-000-A0	Oven Thermostat
100	20.02.000874-000-A2	Welding parts for control panel
101	07.02.000316-000-A0	Metal switch with lamp
102	04.04.000480-000-A0	Alida pressure regulating valve fixing clamp
103	04.04.001004-000-A0	Pressure regulating valve baffle
104	04.02.001006-000-A1	Oven Floor Cover
105	11.03.000132-000-A0	Main manifold bellows joint
106	04.02.000986-000-A1	Control panel seal
107	11.03.000131-000-A0	Main manifold bellows

108	20.06.000560-000-A1	Welding parts for oven bottom plate cover
109	18.01.000470-000-A0	Bottom insulation cotton
110	04.04.000836-000-A0	Bottom plate
111	04.04.000004-000-A1	Bottom plate lining mounting frame
112	04.03.000374-000-A2	Bottom lining
113	04.04.000989-000-A2	floor
114	04.04.002652-000-A0	Pull riveting reinforcing plate
115	05.01.000189-000-A0	Adjustable leg
116	18.01.000484-000-A0	Left upper board inner insulation cotton
117	11.03.000128-000-A0	Main manifold a.
118	20.04.000566-000-A1	Welding parts for air valve fixing plate
119	09.01.000020-000-A0	15000BTU Main burner valve
120	09.01.000007-000-A0	Main furnace head air valve (CP)
121	06.13.000010-000-A0	Main furnace head air valve fixing clamp
122	06.01.000070-000-A0	Main furnace head air valve fixing clamp screw
123	04.04.000875-000-A0	Temperature control valve fixing plate
124	04.02.001997-000-A0	Knob Bezel
125	04.02.001448-000-A0	Knob decorative ring fixing piece
126	22.99.000159-000-A0	Double fire main air valve knob assembly
127	22.99.000160-000-A0	Single main air valve knob assembly
128	22.99.000161-000-A0	Oven temperature control valve knob assembly
129	07.05.000360-000-A0	Blue dc LED light assembly
130	20.02.000521-000-A1	Left side plate welding
131	17.01.008001-000-A0	Cover the rubber gasket
132	06.01.000017-000-A0	Non-inclined screw
133	04.04.000872-000-A1	Left board lining
134	04.03.000005-000-A3	U-shaped fire row left panel
135	05.03.000017-000-A0	Door hinge splint
136	04.01.002245-000-A1	Door frame
137	04.04.000592-000-A0	Door frame anti-distortion gasket
138	06.01.000079-000-A0	M5*12 hinge screw (umbrella head)
139	11.05.000014-000-A0	Gasket
140	04.02.000211-000-A1	Door back plate anti-jumping porcelain gasket (L)
141	20.06.000007-000-A1	Welding piece behind door
142	20.02.000576-000-A0	Solders for door bottom decorative plate
143	18.01.000502-000-A0	Door insulation cotton I
144	18.01.000503-000-A0	Door insulation cotton II

APPLICABLE MODEL: KRD366F

145	04.02.000212-000-A1	Door back plate anti-jumping porcelain gasket (R)
146	04.03.000104-000-A0	The door liner
147	05.03.000029-000-A0	Door hinge left
148	22.99.000110-000-A0	Oven window assembly
149	05.03.000028-000-A0	Door hinge right
150	15.01.000017-000-A0	Gray Glass
151	04.02.000987-000-A1	Handle seat cushion
152	20.02.000213-000-A2	Front door welding piece
153	12.02.000026-000-A0	Handle seat retaining rod
154	12.02.000068-000-A1	Door handle, left
155	12.01.000017-000-A1	Door Handle
156	12.02.000069-000-A1	Door handle, right