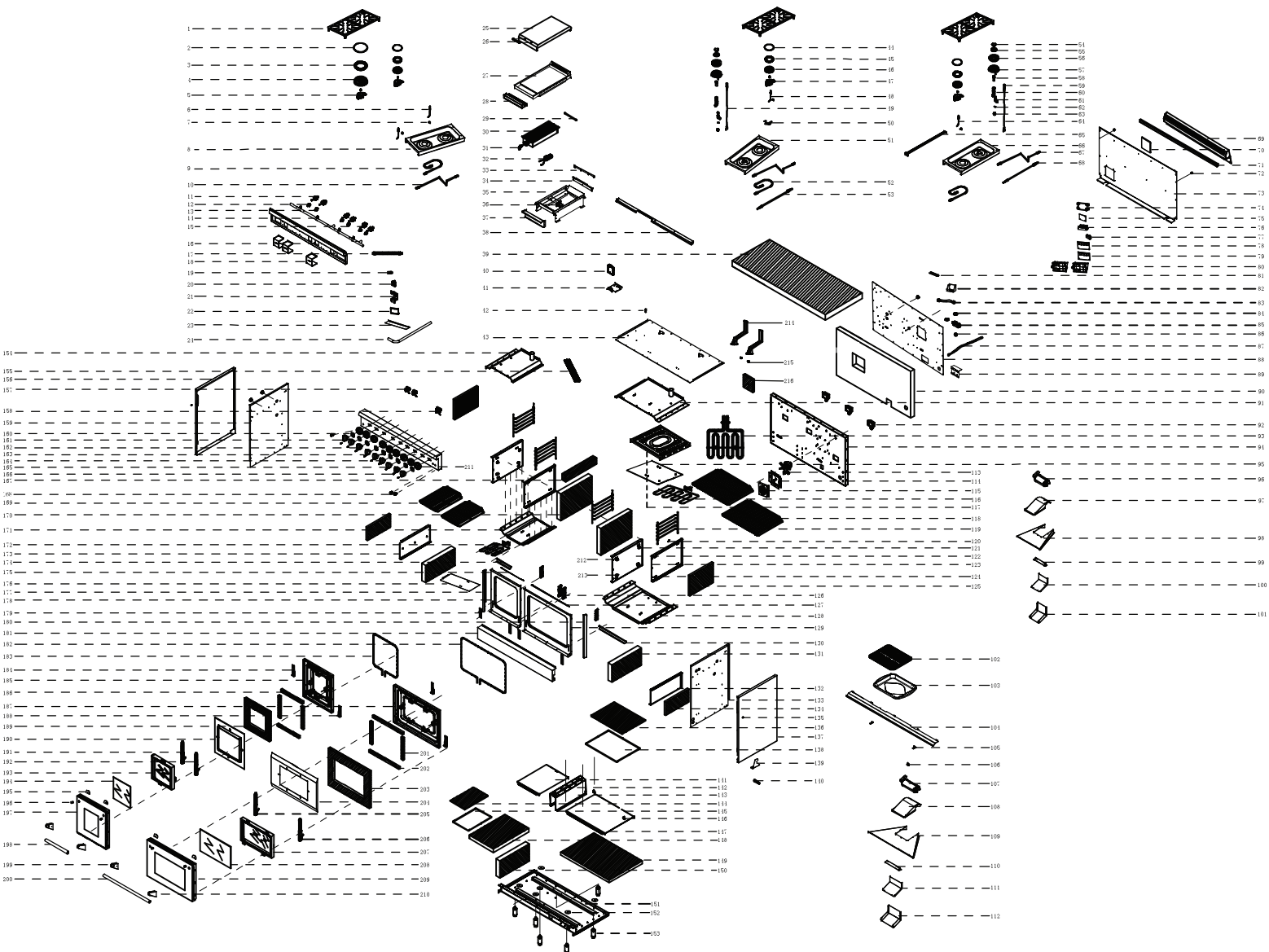


SUPPORT I DUAL FUEL RANGE KRD486F



SUPPORT I DUAL FUEL RANGE KRD486F



1	13.01.000031-000-A0	Cooking grate
2	10.01.000076-000-A0	Burner Cap (18000BTU)
3	10.01.000077-000-A0	Flame Ring (18000BTU)
4	10.01.000078-000-A0	Flame Ring Base (18000BTU)
5	10.01.000079-000-A0	Bottom Cup (18000BTU)
6	10.09.000072-000-A2	Electrode
7	06.09.000062-000-A0	C-clip for single burner
8	04.06.002163-000-A1	furnace head supports beam (rear)
9	12.02.000121-000-A0	Main furnace head gas valve aluminum tube E
10	11.02.000118-000-A0	Main furnace head gas valve aluminum tube C
11	09.01.000007-000-A0	Main furnace head air valve (CP)
12	06.13.000010-000-A0	Main furnace head air valve fixing clamp
13	06.01.000070-000-A0	Main furnace head fixing clamp screw
14	11.03.000127-000-A1	Manifold a.
15	09.01.000020-000-A0	0 degree air valve for main furnace head
16	20.04.000974-000-A0	Welding parts for air valve fixing plate
17	11.01.000133-000-A0	Pressure regulating valve main bellows
18	04.04.000875-000-A0	Temperature control valve fixing plate
19	11.03.000132-000-A0	Main manifold bellows joint
20	09.03.000009-000-A0	Regulator
21	04.04.000480-000-A0	Alida pressure regulating valve fixing clamp
22	04.04.001000-000-A0	Pressure regulating valve heat shield
23	04.04.001004-000-A0	Pressure regulating valve baffle
24	11.03.000130-000-A0	Main manifold B
25	20.01.000539-000-A0	Solder for frying pan cover
26	12.03.000005-000-A0	Griddle Cover Handle
27	20.99.000026-000-A3	Frying pan welding
28	20.01.000538-000-A2	Oil collecting disc welding parts
29	04.03.000125-000-A1	Frying pan with infrared layering
30	10.03.000018-000-A2	Frying pan infrared
31	05.05.000060-000-A0	Pan nozzle rack
32	07.01.000411-000-A0	U type fire bank ignition plug
33	04.02.002125-000-A0	Holder of heat stick for frying pan
34	04.02.000783-000-A0	Pan liner
35	04.03.000109-000-A2	Frying pan bracket
36	04.03.000187-000-A1	Ignition plug holder for frying pan
37	04.03.000922-000-A0	Frying pan stand heat shield
38	04.04.000310-000-A1	furnace head supports beam(rear)
39	18.01.000967-000-A0	Oven top insulation cotton
40	07.07.000283-000-A0	Pulse igniter
41	04.04.001652-000-A1	Power box support
42	06.15.000152-000-A0	Line buckle
43	04.04.000959-000-A1	The top plate
44	10.01.000020-000-A0	The furnace top of the head cover
45	10.01.000021-000-A0	Burner ring

46	10.01.000022-000-A0	Flame Ring Base
47	10.01.000023-000-A0	The furnace head base
48	07.10.000151-000-A2	Furnace head electrode 3
49	07.99.000321-000-A1	Furnace head electrode 1
50	04.04.001675-000-A3	15K furnace head bracket
51	04.06.002126-000-A2	Furnace head support plate
52	11.02.000123-000-A0	0 degree air valve 48 aluminum tube C
53	11.02.000006-000-A1	Main valve aluminum tube B
54	10.01.000176-000-A0	Inner Burner Head
55	10.01.000177-000-A0	Inner Burner Head
56	10.01.000178-000-A0	New burner ring
57	10.01.000179-000-A0	New burner base
58	10.04.000069-000-A0	Burner Supporter Pipe
59	07.99.000322-000-A1	electrode 2
60	22.99.000015-000-A2	Main Jet Holder
61	22.99.000073-000-A0	Burner small nozzle assembly
62	04.02.001836-000-A0	Ignition pin holder
63	06.04.000330-000-A0	conductive plate
64	07.10.000115-000-A3	Burner electrode 4
65	04.06.002127-000-A1	Drip Pan Trim
66	04.06.002162-000-A2	Drip Pan
67	11.02.000085-000-A0	0 degree air valve 48 aluminum tube D
68	11.02.000005-000-A1	Main air valve aluminum tube A
69	20.01.000572-000-A2	Island Trim
70	04.04.000792-000-A1	After the plate cover
71	04.04.000337-000-A0	Rear plate stiffener
72	06.08.000043-000-A0	Rear plate rubber pad
73	04.04.002108-000-A1	The rear panel
74	05.99.000153-000-A0	Power panel mounting box
75	07.13.000318-000-A0	Luminous knob power panel
76	05.07.000194-000-A0	terminal
77	06.13.000191-000-A0	Power line clamp
78	07.08.000331-000-A0	Relay oven control panel
79	07.08.000337-000-A0	Relay oven control panel
80	06.06.000269-000-A0	Relay oven electric control panel fixing box
81	04.04.000551-000-A0	Back plate lined with C
82	04.04.001327-000-A1	Power line support
83	11.02.000192-000-A0	Frying pan infrared aluminum tube B
84	05.07.000018-000-A2	Safety valve connection
85	09.04.000006-000-A0	The safety valve
86	17.02.000001-000-A0	Bushing (sb-30)
87	11.02.000115-000-A0	Frying pan infrared aluminum tube A
88	04.04.002617-000-A1	After plate lined with
89	04.04.000321-000-A0	Safety air valve bracket C
90	18.01.000481-000-A1	Rear panel insulation cotton
91	20.99.000563-000-A3	Welding piece for oven top
92	07.04.000117-000-A1	The oven lamp
93	10.04.000121-000-A0	3.5 KW heat pipes
94	20.06.000571-000-A1	Welding piece for oven back plate

95	04.03.002115-000-A0	30 "floor flameproof panel
96	07.99.000224-000-A0	18 inch cross-flow fan
97	04.03.000951-000-A0	Cover of jet blower (small)
98	04.04.000950-000-A0	Cross flow fan air cover (small)
99	04.04.000949-000-A1	Cross flow fan fixed plate (small)
100	04.03.000948-000-A0	Cross flow fan outlet B(small)
101	04.03.000947-000-A0	Cross flow fan outlet A(small)
102	04.06.000077-000-A1	Broil Pan Cover
103	04.06.000078-000-A1	Broil Pan
104	04.02.001020-000-A1	Control panel bottom plate
105	04.02.000986-000-A1	Control panel seal
106	07.02.000222-000-A0	Keep the thermal switch on
107	07.99.000221-000-A0	Tubular fan
108	04.03.000898-000-A0	Cross - flow hood
109	04.04.000946-000-A0	Cross - flow fan gathering hood
110	04.04.000896-000-A0	Cross-flow fan fixing plate
111	04.03.000895-000-A0	Cross flow fan outlet B
112	04.03.000894-000-A0	Cross-flow fan outlet A
113	07.03.000006-000-A0	Convection Fan
114	04.04.000464-000-A1	The fan bearing
115	04.06.002243-000-A0	Fan Cover
116	10.04.000123-000-A0	3.0 KW heat pipes
117	20.06.000192-000-A1	Welding parts for oven bottom plate cover
118	13.05.000056-000-A0	30 "grill
119	13.05.000053-000-A0	Oven rack supporter
120	04.01.002239-000-A0	New heat sensing bar bracket
121	04.02.000443-000-A1	Upper supporting sheet behind the hanger
122	04.06.000441-000-A0	Oven center left inner plate
123	04.02.000444-000-A1	Rear lower brace
124	04.06.000442-000-A0	Oven center right inner plate
125	18.01.000137-000-A0	Oven side panel insulation cotton
126	05.03.000017-000-A0	Hinge Receiver
127	04.02.000055-000-A1	The oven baffle
128	20.06.000510-000-A1	Solders for oven bottom plate
129	04.01.002096-000-A2	Door frame
130	04.01.000862-000-A1	Door frame trim
131	18.01.000148-000-A0	48 Left and right lower board inner cotton
132	04.03.000006-000-A3	U-shaped fire row right board
133	04.04.000873-000-A1	Right board lining
134	18.01.000149-000-A0	48 Left and right outer cotton
135	17.01.008001-000-A0	rubber gasket upper cover
136	18.01.000422-000-A0	Bottom insulation cotton
137	20.02.000522-000-A1	Right plate welding piece
138	04.04.000848-000-A0	Bottom partition
139	04.04.000066-000-A0	Anti-tilt fixing block
140	06.01.000017-000-A0	Non-inclined screw
141	04.03.000294-000-A0	18 "floor liner
142	04.03.000563-000-A0	Bottom left panel of oven

143	04.03.000564-000-A0	Bottom right panel of oven
144	18.01.000473-000-A0	18 "insulation cotton for bottom partition
145	04.04.000852-000-A0	18 inch bottom plate
146	04.04.000004-000-A1	Bottom plate lining mounting frame
147	04.03.000341-000-A1	Bottom lining
148	18.01.000133-000-A1	18 "panel insulation cotton
149	18.01.000145-000-A1	30 "insulation board cotton
150	18.01.000136-000-A0	Insulation cotton in the middle of the bottom plate
151	20.99.000570-000-A2	Soldered base plate
152	04.04.002652-000-A0	Pull riveting reinforcing plate
153	05.01.000189-000-A0	Support legs
154	20.06.000553-000-A2	18 "oven top solder
155	20.06.000982-000-A0	Welding parts for oven bottom plate cover
156	20.02.000521-000-A1	Left side plate welding
157	07.12.000017-000-A0	Frying pan infrared temperature control valve
158	07.12.000005-000-A0	Oven infrared temperature control valve
159	04.04.000872-000-A1	Left board lining
160	04.02.001448-000-A0	Knob decorative ring fixing piece
161	22.99.000160-000-A0	Single main air valve knob assembly
162	22.99.000162-000-A0	Frying pan temperature control air valve knob assembly
163	20.02.000943-000-A1	Welding parts for control panel
164	22.99.000159-000-A0	Double fire main air valve knob assembly
165	22.99.000161-000-A0	Oven temperature control valve knob assembly
166	07.05.000360-000-A0	Blue dc LED light assembly
167	18.01.000139-000-A0	Inner insulation cotton in the middle of roof
168	07.02.000316-000-A0	Metal switch with lamp
169	13.05.000058-000-A0	18-inch grill
170	18.01.000138-000-A0	Oven middle insulation cotton
171	20.06.000555-000-A1	18 "soldered bottom of oven
172	10.04.000124-000-A0	2.5 KW heat pipes
173	04.03.000005-000-A3	U-shaped fire row left panel
174	04.01.000864-000-A1	Door frame trim
175	04.02.000318-000-A0	18 "oven flap
176	04.03.002110-000-A0	18 "floor flameproof panel
177	20.02.000972-000-A1	Left door frame positioning bar welding
178	04.01.002097-000-A1	18 inch frame
179	04.04.000592-000-A0	Door frame anti-distortion gasket
180	20.02.000973-000-A1	Right door frame positioning bar welding
181	20.02.000585-000-A0	Solders for door bottom decorative plate
182	11.05.000012-000-A0	Door flap seal strip
183	11.05.000034-000-A0	18 "door flap seal strip
184	04.02.000211-000-A1	Door back plate anti-jumping porcelain gasket (L)
185	20.06.000546-000-A0	18 "welding piece behind door
186	18.01.000190-000-A0	18 "door insulation cotton up and down
187	20.06.000013-000-A0	Welding piece behind door
188	04.02.000212-000-A1	Door back plate anti-jumping porcelain gasket (R)
189	18.01.000134-000-A0	18 "door back panel upper insulation cotton
190	04.03.000330-000-A0	18 "door panel

191	05.03.000030-000-A0	18 "door hinges left
192	05.03.000031-000-A0	18 "door hinges right
193	22.99.000109-000-A0	18 "window component
194	15.01.000018-000-A0	18" oven door glass
195	04.02.000987-000-A1	Handle seat cushion
196	12.02.000026-000-A0	Handle seat retaining rod
197	20.02.000211-000-A0	18 "front plate welding piece
198	12.01.000019-000-A1	18" Door Handle
199	12.02.000068-000-A1	Door Handle Support, Left
200	12.01.000011-000-A1	18" Door Handle
201	18.01.000189-000-A0	30 "door insulation cotton around
202	18.01.000188-000-A0	30 "door insulation cotton up and down
203	18.01.000147-000-A0	30 "door insulation cotton 2
204	04.03.000069-000-A0	The door liner
205	05.03.000015-000-A0	Door hinge left
206	05.03.000016-000-A0	Door hinge right
207	22.99.000110-000-A0	Oven window assembly
208	15.01.000017-000-A0	Gray Glass
209	20.02.000609-000-A0	Front door welding piece
210	12.02.000069-000-A1	The right hand seat
211	04.02.001997-000-A0	Knob Bezel
212	04.02.000268-000-A1	Hanger support piece
213	04.02.000269-000-A1	Undercarriage support
214	20.03.000193-000-A0	Vent weld components
215	10.99.000120-000-A1	Overheat protector
216	18.01.000011-000-A2	Fan support insulation cotton